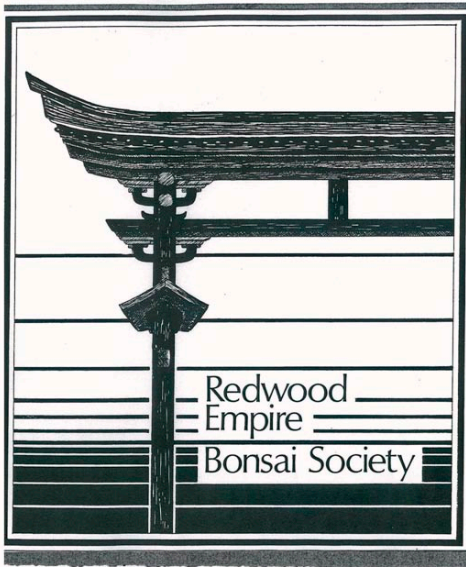


# Redwood Empire Bonsai Society



## REBS NEWSLETTER

Volume 28, Issue 3

March 2011

### President's Message



REBS President Arty Kopecky

Thank you to Jeff Konicek for an entertaining evening and a change of pace. Jeff can be seen at the annual show with the watering cart, with spray bottles, keeping the plants and ground covers hydrated and any spilled water wiped up. It is a sort of religious caring routine: attendant of the temple. I play a similar role myself at the Harmony Fair.

Next month we have a joint (not that kind) meeting with our fellow enthusiasts of the Marin Bonsai Club in a return match of the ever popular Throw Down Style-off. See George's descriptive article below explaining the wondrous proceedings.

I wish to continue with my theme of the community of bonsai with recollections of our club's history. This July we will have our 30th traditional Annual Picnic at Lone Pine Gardens. Janet and Ian have been part of the club since the

inception. They met while working at UC Berkeley in the Botany department. Janet's maiden name was Price so people always assumed they were a couple -- evidently they got tired of explaining and instead got married. They used to visit a Mr. Sato's bonsai nursery on University Ave., who assisted and kindled their knowledge of bonsai. In 1972 they moved back to England and started a bonsai nursery with (the famous) Peter Adams who was married to Ian's sister. After three years they decided to return to the US of A with the (brilliant) idea to start a bonsai and succulent nursery. Fate brought them to the Lone Pine property. They spent their entire fortune (under \$20,000) on property and a vehicle and in true pioneer fashion set about creating a little paradise and business actually selling farm raised meat and vegetables for income (!). So we have quite the romance as one of the foundations of REBS.

*Continued on 3*

#### Inside this issue:

President's Message .....	1
Throw Down Event .....	2
Upcoming Bonsai Events....	3
Creation Pruning Event .....	4
Show and Tell .....	5
Directory 2011 .....	6
Calendar of Events .....	7

# Redwood Empire Bonsai Society

## Bonsai Throw Down Event – Tuesday March 22

**It's** our turn to open the doors and welcome the Marin Bonsai Club (MBC) at our March 22nd meeting. We are going to have a good, old fashioned Throw Down contest.

Well gee, George, what's that all about? It's all about taking good nursery stock junipers and styling them into bonsai. And, there is friendly competition to do it better than anyone else.

It all started a year ago with the MBC inviting the Bonsai Society of San Francisco to their first ever "Iron Man Bonsai" contest. Then, MBC challenged REBS this year in January. REBS accepted their challenge with the right of REBS to conduct a re-match in March. The contest rules are simple: There are six teams, three two-person teams from each club; one member should be a beginner or intermediate bonsaiist; each team will draw for their tree; styling is completely up to team members; and teams must complete the tree styling within the time allotted. REBS will provide the wire, plastic table covers, sketch paper and pencils/pens, and six trees. The six trees will be raffled and go home with the winning ticket holders. The best of the Throw Down contest will be determined by the tree with the largest number of raffle tickets sold and entered into its bucket. How simple can that be?

Ivan Lukrich is forming the REBS teams. Other volunteers are gathering the materials and trees.

Oh, you want to know who won between REBS and the MBC in January? It was so close they had to count the raffle tickets *three times* to determine the winner: By 143 to 140 tickets, the winning team was Jay McDonald and Peter Miller of MBC. The runner up team was our own Bernardo Fernandez and Frank Bardella.

Measuring total years of bonsai experience, REBS had 180, versus 90 years for the MBC contestants. Audience support was enthusiastic. The event was moderated by MBC sensei Tim Kong who began the contest by outlining the rules and goals. He prompted each team to describe its approach to design, trimming, wiring, jin and shari features, and overall styling of the tree. At the conclusion, the teams took turns outlining steps to take in caring for the trees, including repotting, watering, and feeding requirements. It was an evening of fun, laughter, learning, getting to know one another, and sharing a common interest in bonsai.

Mark your calendar for this special joint REBS and MBC event on the evening of March 22nd, starting at 7:30 PM, at the Santa Rosa Veterans Memorial Building.

—George Haas



Visit the web site of GSBF for complete monthly events and/or revised dates.

WEB SITE HOME FOR  
GOLDEN STATE BONSAI  
FEDERATION (GSBF):  
[WWW.GSBFBONSAI.ORG](http://WWW.GSBFBONSAI.ORG)

## Upcoming Bonsai Events

March 10

San Francisco

**Bonsai Society of San Francisco:** Demonstration by Ryan Neil, five year apprenticeship in Japan. Headliner at the 2010 GSBF Bonsai Convention. March 10, 7:30 pm San Francisco County Fair Building, Ninth Avenue and Lincoln Way, SF. Join us for an exciting evening with this engaging bonsai artist.



March 12,13

Oakland, California

**Bay Area Bonsai Associates:** 29th Annual Show at the Lakeside Park Garden Center, 666 Bellevue Avenue, Oakland. Admission is free. Parking is Free Sunday, Saturday after 5pm. Show hours are: Saturday 5pm to 9 pm; Sunday 10 am to 4pm. There will be a Saturday demonstration by Ryan Neil at 6:30 pm followed by a general raffle including the demo tree. The Plant sale during exhibit hours both days will include pre-bonsai, bonsai, pots, tools, soils, wire, literature and other bonsai related materials. Ryan Neal apprenticed with Masahiko Kimura and is noted for his Bonsai demonstration and teaching excellence. Ryan will also be available in northern California for individual consultation and Bonsai club workshops around the time of the BABA show. For more information about the show or if you or your club would like more information about Ryan's availability, contact John Roehl at 707-827-3506 or at [bigbluemoon@comcast.net](mailto:bigbluemoon@comcast.net).

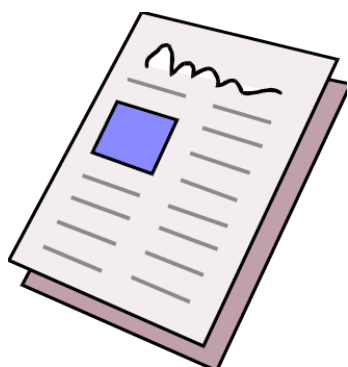
*Continued from 1*

I believe Ian first met Kay Urbanski at the San Francisco club's show. She was wanting to move up this way and did so after a while. She talked to Janet and Ian about forming a club. Ian evidently suggested they call it a "society", and thus the REB Society name. Kay already knew Mas Imazumi who lived in Berkeley and she brought him, I believe, to the first picnic. Gene and Becky Lynch were also founding members and they first met at the Franklin Club House off of Steele Lane. Gene knew Kay from the SF Club. Ron Kelley, who passed away not long ago, was also in that early group.

So there you have it; a beginning. In future I will bring in other of the

main characters, until we come to the present of a very strong 'society' with many expert enthusiasts and enough trees for a magnificent show. And our story continues as new people join the club and we wonder who will become accomplished, and who will join the core group as EDITOR-IN-CHIEF! The suspense grows, the possibilities multiply, the mystery deepens. The mists shroud the crystal ball, I cannot see what is foretold; but somewhere in the shadows of future time the answer lies. Until next time and the next episode of, "As the Bonsai Grows", I bid you adieu. And always remember, "First things first", but not necessarily in that order.

—Art Kopecky



Your newsletter still needs a new editor! Right now! Can you help?

# Redwood Empire Bonsai Society

## REBS' First Creation Pruning Event — with Jeff Konicek

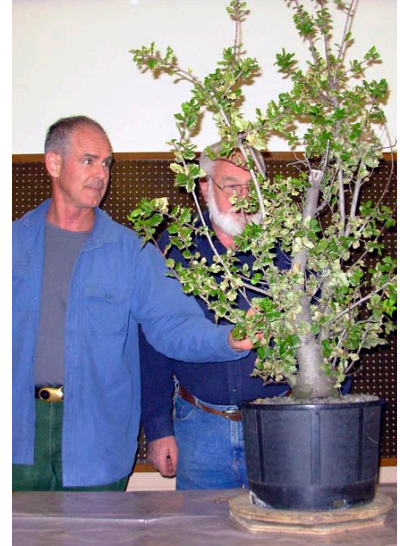
**We** brought out our inner sensei, with Jeff Konicek's guidance, to work in teams making initial assessment and thoughtful early shaping of pre-bonsai trees at our monthly meeting on 22 February.



George Haas and John Roehl check out a pre-bonsai crabapple tree.

Teams of old hands and new enthusiasts worked together to assess rough stock potential, including positive and negative attributes, finding the best front and planting angle, and deciding which limbs would lend themselves best to creating a pleasing bonsai. Then the nippers and saws came out and

the wood flew as each group removed excess branches and trunks to prepare the tree for its future life as a bonsai—a piece of living art that will continue to evolve, grow and change over its (hopefully) long lifetime.



Demo live oak tree before design work began, Dave Hattem and John Roehl.



The crabapple, under team scrutiny, receives its initial pruning.



Richard Hoskins performs surgery on his team's procumbens juniper.



Ivan Lukrich and his team are psyched for transforming their trident maple and elm stock trees.



Event facilitator Jeff Konicek with demo tree winners Jim and Debbie Gallagher.



Demo live oak tree undergoes bonsaiing by committee: a good idea? You be the judge.





Art Kopecky's Coral Bells azalea, in glorious full spring bloom.



A sweet succulent accent plant abides serenely in Jim Gremel's thin-slab constructed planter.



Gene Lynch's air-layered Flowering Plum tree smelled as heavenly as it looked—you just had to be there to appreciate the effect.



Craig Thompson's Mendocino Pygmy Cypress makes a dramatic, precipitous cascade.



President Arty Kopecky and past-President Ivan Lukrich admire this month's show and tell display.



Jim Gremel has been nurturing this lovely juniper tree since 1995. Is it done yet, Jim? 5

# Redwood Empire Bonsai Society

## Help Wanted:

The directory at right shows several positions *open* and in need of your support.

The club needs to fill these open positions as soon as possible. The new year is a busy time and lots of club activities are taking shape, such as the calendar of events.

If interested, please contact President Arty Kopecky or any board member.

*What are you waiting for?*



## Directory 2011

Art Kopecky President	(707) 829-5670	artsankopecky@msn.com
Rick Batcheller Vice President		r1xcape@sonic.net,
<i>(Open)</i> Secretary/Editor		
Yvonne Batcheller Treasurer		ybforms@sonic.net
Wayne Culp Board Member	(707) 874-1809	doublec@sonic.net
Jim Gallagher Board Member	(707) 575-8726	
Ivan Lukrich Board Member	(707) 527-0795	lukrich@sonic.net
Ned Lycett Board Member	(707) 887-2004	nlycett@comcast.net
Gene Lynch Board Member	(707) 763-7504	erlynch@aol.com
Bob Shimon Board Member	(707) 884-4126	shimon@mcn.org
James Whitfield Board Member	(707) 538-1077	jawhit6@yahoo.com
Jim McGlashan Past President	(707) 942-6316	
Kathy Shaner Sensei/Accredited Bonsai Master	(408) 226-6625	
<i>(Open)</i> Membership Chair		
<i>(Open)</i> Magazine & Video		
James Whitfield Book Librarian	(707) 539-4253	jawhit6@yahoo.com
Celestia Amberstone Webmaster/Editor du jour	(707) 527-6292	rebsweb@earthlink.com

## Calendar Of Events

### March 2011

1 Board Meeting at Jim Gallagher's.

17 Intermediate I Workshop, Thursday, VA Memorial Bldg, Santa Rosa, with Richard Hoskins and Ivan Lukrich.

18 Intermediate II Workshop, Friday, Frank Bardella's Bonsai Studio, with Frank Bardella and Gene Lynch.

22 General Meeting and Demonstration, 4th Tuesday, 7:30-10:00 PM, VA Memorial Bldg, Santa Rosa. **Bonsai Throw Down with Marin Bonsai Club** (see article on page 2). Be there or be .

No Shaner workshops this month.

## Annual Show 2011

Snow on the hilltops, frost in the valleys—it's still winter, but spring will be upon us (for real this time) very soon. So it's not too soon to begin making decisions, prepping and grooming those trees for our **28th Annual Bonsai Show**, just six months away as the goose flies over the calendar:

### REBS 28<sup>th</sup> Annual Bonsai Show

Saturday · August 27th · 10 a.m. - 5 p.m.

Sunday · August 28th · 10 a.m. - 4 p.m.

One of the largest and best bonsai shows in the United States

Daily demos by renowned Bonsai Master Kathy Shaner  
1:00 - 3:30 both days

Santa Rosa Veterans Memorial Building  
1351 Maple Avenue, Santa Rosa

For information contact: Bob Shimon  
707-884-4126 · shimon@mcn.org



Official REBS Newsletter is published monthly.

## Redwood Empire Bonsai Society



Veterans' Memorial Building,  
Santa Rosa, California

REBS was founded in 1981 for bonsai enthusiasts. Our club meets every fourth Tuesday of the month (except in July and December). The monthly meeting and demonstration is held at the Veterans' Memorial Building (across from the Sonoma County Fairgrounds) at 1351 Maple Ave., Santa Rosa, in the Lodge Room. Open to the public. Please refer to our calendar of events for specific time, date and guest demonstrator.

---

---

**We're on the web:**  
**[www.rebsbonsai.org](http://www.rebsbonsai.org)**

---

---

Redwood Empire Bonsai Society  
PO Box 2872  
Santa Rosa CA 95405-2872

*Address Correction Requested  
Please Forward*

