

Redwood Empire Bonsai Society



REBS NEWSLETTER

Volume 29, Issue 1

January 2012



REBS President Arty Kopecky

President's Message

Dear Friends:

Greetings for the New Year. Let me review a few goals for 2012 (!). First is preparing for our show in August. We basically have the same crew in place, thanks all. It is never too soon to think of what plants one wants to display; that way one can follow the development and judge how to improve. Another goal would be to visit, and be a docent at, the Collection North during the year. Another task is to look over your nursery and select plants to pass on so you can concentrate on the best.

Pick your focus. My personal goal is to learn more about azaleas in bonsai and to visit the Lotus nursery. I would also like to get an outstanding redwood bonsai developing.

It is easy to fall behind on removing wire and then rewiring, so keep

a close eye on your specimens and bring them up to the work bench for refining. Also good to select which plants will be needing repotting over the coming year. John Roehl serves as doctor bonsai at our monthly meetings, so bring in any plants you have questions about; I intend to make better use of this service myself this year. And when around your nursery think of which plants you might bring in for Show and Tell and get them prepared. This is an important and lively feature of our meetings, so please do help.

During the year there are many shows and conventions; easy to immerse yourself if you so desire.

It is not too soon to think about the newsletter editorship. Celestia has said she will continue to do her fine

Inside this issue:

President 's Message	1
Announcements & Upcoming Events.....	2
Quirks Corner	2
Calendar of Events	3
Shaner Workshops	4
Directory	5

Continued on page 3

Redwood Empire Bonsai Society

Announcements and Upcoming Bonsai Events

January 14-15

Oakland, CA

Bay Island Bonsai: Annual Bonsai Exhibit at the Lakeside Garden Center, 666 Bellevue Avenue. Hours are 10 a.m. - 4 p.m., both days. On Saturday at 1 p.m. there will be an auction, with a preview at 12 noon. Guided tours of the exhibit both days. Benefit Drawing (need not be present to win). Vendors; club member and educational bonsai material will be for sale. Free entry to the exhibit. Donations accepted. For more information call: 510.919.5042 or visit www.bayislandbonsai.com.

January 28-29

Oakland, CA

Bay Area Bonsai Associates: 31st Annual Bonsai Exhibition at the Lakeside Park (Lake Merritt) Garden Center, 666 Bellevue Avenue. Show hours are Saturday, 5 - 9 p.m., a demonstration by Ryan Neil starts at 6:30 p.m., followed by a raffle of the demonstration tree. Sunday hours are 10 a.m. - 4 p.m. A plant sale (including bonsai-related items such as pots, tools, soils, wires, books, etc.) will be continuous both days. Admission is free. For more information contact John Roehl at bigbluemoon@comcast.net or 707.827.3206.

February 3-5

Santa Nella, CA

California Shohin Seminar 2012 at the Hotel de Oro. Demos on Friday, workshops on Saturday. Registration forms and information can be found at www.calshohin.org, or email calshohin@yahoo.com.

February 25-26

Oakland, CA

GSBF Bonsai Garden at Lake Merritt: Mammoth Fundraiser, 2012 at the Lakeside Garden Center, 666 Bellevue Avenue. On Saturday an auction of fabulous bonsai will be from 1 - 4 p.m., with preview at 12 noon. Sunday hours are from 9 a.m. - 4 p.m. and will feature demonstrations by Collection Curator, Kathy Shaner and Team; many vendors, a large consignment sale of bonsai and bonsai related items and several raffle drawings throughout the day.

For general information email www.bonsailakemerritt@gmail.com, visit www.gsbf-bonsai.org/lake-merritt/NewHome.htm, or phone Randi Keppeler 650.598.0127.

Quirks Corner



The print reproduced here is from the collection of a REBS member, who offers a valuable bonsai-related prize for the best explanation and identification of the illustration and its contents. All submissions should be addressed to the Workshop Chair, Will Spires at: will_spires@comcast.net.

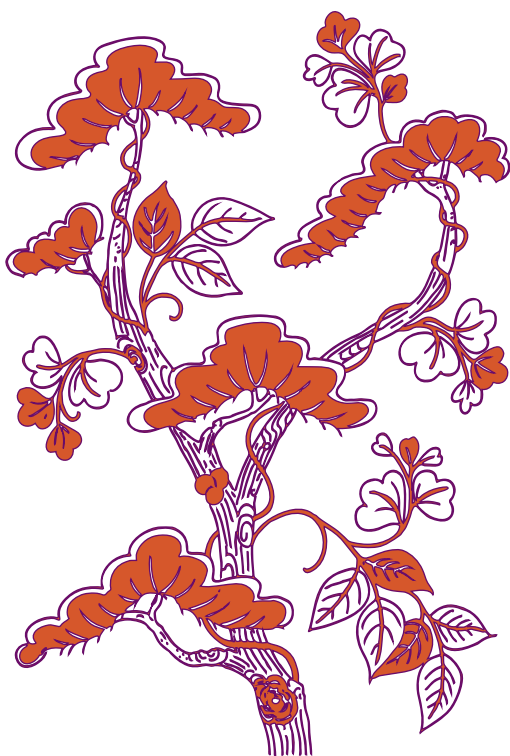
President's Message
continued from page 1

work until October. It will be much easier to have a volunteer on board some months in advance so he or she can learn the basics. This is an opportunity to acquire a valuable skill or two from an accomplished graphic artist. Please step up!

Also, we have lacked a Secretary for a long time; we basically need someone to take the notes at our board meetings and be familiar with the by-laws.

We have a reputation for both friendliness and excellence in the art of bonsai. Thanks all for keeping and further enhancing the good name of the Redwood Empire Bonsai Society.

— Arty Kopecky



Calendar Of Events

January 2012

- 3rd Board meeting at Arty Kopecky's. All are welcome.
- 19th Intermediate I Workshop, Thursday, Santa Rosa Senior Center, 704 Bennett Valley Rd., Room 17, Santa Rosa, with Richard Hoskins and Ivan Lukrich.
- 20th Intermediate II Workshop, Friday, Frank Bardella's Bonsai Studio, with Frank Bardella and Gene Lynch.
- 22nd Kathy Shaner Advanced Workshop, Sunday (6.3). and special repotting & wiring evening. **Still one vacancy!***
- 23rd Kathy Shaner Advanced Workshop, Monday (6.1 & 3.1)
- 24th Kathy Shaner Advanced Workshop, Tuesday (6.2)

* Fee is \$53. Please bring your own soil, wire, mesh, and tools. Call Will Spires (707.328.5377) or email will_spires@comcast.net ASAP to reserve these spaces. All members are welcome, any level.



2012 DATES FOR THE SHANER ADVANCED WORKSHOPS, THROUGH MAY

JANUARY

Sunday Jan 22: 6.3 and evening repotting and wiring by appt (3 member limit).

Monday Jan 23: 6.1 and 3.1

Tuesday Jan 24: 6.2 with evening demo at meeting.

FEBRUARY

Sunday Feb. 12: 6.3 and evening repotting and wiring by appt (3 member limit).

Monday Feb 13: 6.1 and 3.1

Tuesday Feb.14: 6.2 and evening repotting and wiring by appt (3 member limit).

MARCH

No shaner advanced workshops.

APRIL

No shaner advanced workshops.

MAY

Thursday, May 17: 6.1 and 3.1

Friday, May 18 6.2 and evening wiring or other topics (no repotting without prior approval, 3 member limit).

Saturday May 19: 6.3, **STARTS TODAY ONLY AT 8 a.m.**, workshop cleared and cleaned by 4 p.m!

WORKSHOP CHAIR'S NOTE :

The previous newsletter had the wrong date for the February Shaner 6.2 workshop. My mistake, likely as not, but the correct date is St. Valentine's Day, Tuesday, Feb. 14, NOT Tuesday, Feb 23rd.

Also, please note that there is still a vacancy in the 6.1 Shaner advanced workshop, beginning this month, January! Step up, somebody, now is your chance!

Finally, there are spots in all of the special Shaner workshops, 1/22, 2/12, and 5/18. Please email me at will_spires@comcast.net if you wish to reserve space. These will be at Frank and Barbara Bardella's, from 6 pm to 9 pm. Fee is \$53.

All the best for a great year in bonsai,

— Will Spires, Workshop Chair



Thanks
to all
REBS
officers!
For this
new year
2012, all
officers will
remain the
same.
(Except for those
spots that need to
be filled)

Directory 2012

Art Kopecky President	707 · 829 · 5670	artsankopecky@msn.com
Rick Batcheller Vice President		r1xcape@sonic.net
(Open) Secretary		
Yvonne Batcheller Treasurer		ybforms@sonic.net
Jim Gallagher Board Member	707 · 575 · 8726	
Ivan Lukrich Board Member	707 · 527 · 0795	lukrich@sonic.net
Ned Lycett Board Member	707 · 887 · 2004	nlycett@comcast.net
Gene Lynch Board Member	707 · 763 · 7504	erlynch@aol.com
Bob Shimon Board Member	707 · 884 · 4126	shimon@mcn.org
James Whitfield Board Member	707 · 538 · 1077	jawhit6@yahoo.com
Jim McGlashan Past President	707 · 942 · 6316	
Kathy Shaner Sensei/Accredited Bonsai Master	408 · 226 · 6625	
Rick Batcheller Membership Chair		r1xcape@sonic.net
James Whitfield and Peter Naughton Magazine & Video	707 · 539 · 4253	jawhit6@yahoo.com
James Whitfield Book Librarian	707 · 539 · 4253	jawhit6@yahoo.com
Celestia Amberstone Webmaster and Newsletter Editor	707 · 527 · 6292	rebsweb@earthlink.com

Official REBS Newsletter is published monthly.

Redwood Empire Bonsai Society



Luther Burbank Art & Garden Center,
Santa Rosa, California

REBS was founded in 1981 for bonsai enthusiasts. Our club meets every fourth Tuesday of the month (except in July and December). The monthly meeting and demonstration are held at the Luther Burbank Art and Garden Center, 2050 Yulupa Avenue, Santa Rosa, 95405. Meetings are open to the public. Please refer to our calendar of events for specific time, date and guest demonstrator.

We're on the web:
www.rebsbonsai.org

Redwood Empire Bonsai Society
PO Box 2872
Santa Rosa CA 95405-2872

*Address Correction Requested
Please Forward*

